

Soprano Sight-Singing

Region

2002



2003



2004



2005



2006 – Region 24



2006 – Region 25



Alto Sight Reading

Pre-Area

2002

Musical notation for 2002: Treble clef, key signature of two flats (Bb, Eb), common time (C). The melody consists of eighth and quarter notes. Fingerings 2 through 8 are indicated above the notes.

2003

Musical notation for 2003: Treble clef, key signature of two flats (Bb, Eb), 4/4 time. The melody consists of quarter and eighth notes. Fingerings 2 through 8 are indicated above the notes.

2004

Musical notation for 2004: Treble clef, key signature of two flats (Bb, Eb), 4/4 time. The melody consists of quarter and eighth notes. Fingerings 2 through 8 are indicated above the notes.

2005

Musical notation for 2005: Treble clef, key signature of two flats (Bb, Eb), 4/4 time. The melody consists of quarter and eighth notes. Fingerings 2 through 8 are indicated above the notes.

2006 – Region 24

Musical notation for 2006 – Region 24: Treble clef, key signature of two flats (Bb, Eb), 4/4 time. The melody consists of quarter and eighth notes. Fingerings 2 through 8 are indicated above the notes.

2006 – Region 25

Musical notation for 2006 – Region 25: Treble clef, key signature of two flats (Bb, Eb), 4/4 time. The melody consists of quarter and eighth notes. Fingerings 2 through 8 are indicated above the notes.

Tenor Sight Reading

Region

2002

Musical notation for 2002: Treble clef, 4/4 time signature, key signature of one sharp (F#). The melody consists of eight measures. Fingerings 2 through 8 are indicated above the notes. The notes are: G4, A4, B4, C5 (quarter); D5, E5, F#5, G5 (quarter); A5, B5, C6, B5 (quarter); A5, G5, F#5, E5 (quarter); D5, C5, B4, A4 (quarter); G4, F#4, E4, D4 (quarter); C4, B3, A3, G3 (quarter); F#3, E3, D3, C3 (quarter).

2003

Musical notation for 2003: Treble clef, 4/4 time signature, key signature of two flats (Bb, Eb). The melody consists of eight measures. Fingerings 2 through 8 are indicated above the notes. The notes are: G4, Ab4, Bb4, C5 (quarter); D5, Eb5, F5, G5 (quarter); Ab5, Bb5, C6, Bb5 (quarter); Ab5, G5, F5, E5 (quarter); D5, C5, B4, Ab4 (quarter); G4, F4, E4, D4 (quarter); C4, B3, Ab3, G3 (quarter); F3, Eb3, D3, C3 (quarter).

2004

Musical notation for 2004: Treble clef, 4/4 time signature, key signature of one sharp (F#). The melody consists of eight measures. Fingerings 2 through 8 are indicated above the notes. The notes are: G4, A4, B4, C5 (quarter); D5, E5, F#5, G5 (quarter); A5, B5, C6, B5 (quarter); A5, G5, F#5, E5 (quarter); D5, C5, B4, A4 (quarter); G4, F#4, E4, D4 (quarter); C4, B3, A3, G3 (quarter); F#3, E3, D3, C3 (quarter).

2005

Musical notation for 2005: Treble clef, 4/4 time signature, key signature of one sharp (F#). The melody consists of eight measures. Fingerings 2 through 8 are indicated above the notes. The notes are: G4, A4, B4, C5 (quarter); D5, E5, F#5, G5 (quarter); A5, B5, C6, B5 (quarter); A5, G5, F#5, E5 (quarter); D5, C5, B4, A4 (quarter); G4, F#4, E4, D4 (quarter); C4, B3, A3, G3 (quarter); F#3, E3, D3, C3 (quarter).

2006 – Region 24

Musical notation for 2006 – Region 24: Treble clef, 4/4 time signature, key signature of two flats (Bb, Eb). The melody consists of eight measures. Fingerings 2 through 8 are indicated above the notes. The notes are: G4, Ab4, Bb4, C5 (quarter); D5, Eb5, F5, G5 (quarter); Ab5, Bb5, C6, Bb5 (quarter); Ab5, G5, F5, E5 (quarter); D5, C5, B4, Ab4 (quarter); G4, F4, E4, D4 (quarter); C4, B3, Ab3, G3 (quarter); F3, Eb3, D3, C3 (quarter).

2006 – Region 25

Musical notation for 2006 – Region 25: Treble clef, 4/4 time signature, key signature of one sharp (F#). The melody consists of eight measures. Fingerings 2 through 8 are indicated above the notes. The notes are: G4, A4, B4, C5 (quarter); D5, E5, F#5, G5 (quarter); A5, B5, C6, B5 (quarter); A5, G5, F#5, E5 (quarter); D5, C5, B4, A4 (quarter); G4, F#4, E4, D4 (quarter); C4, B3, A3, G3 (quarter); F#3, E3, D3, C3 (quarter).

Tenor Sight Reading

Pre-Area

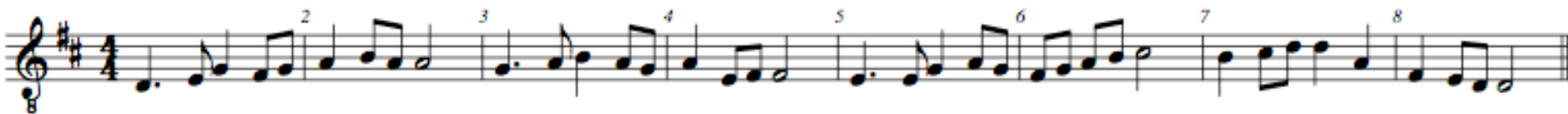
2002



2003



2004



2005



2006 – Region 24



2006 Region 25



Bass Sight Reading

Pre-Area

2002

Musical notation for exercise 2002. It is a single staff in bass clef with a common time signature (C). The key signature has two flats (B-flat and E-flat). The piece consists of eight measures, each containing a sequence of eighth notes. Fingering numbers 1 through 8 are placed above the notes in each measure. The notes are: G2, A2, B2, C3, D3, E3, F3, G3 in the first measure; A2, B2, C3, D3, E3, F3, G3, A3 in the second; B2, C3, D3, E3, F3, G3, A3, B3 in the third; C3, D3, E3, F3, G3, A3, B3, C4 in the fourth; D3, E3, F3, G3, A3, B3, C4, D4 in the fifth; E3, F3, G3, A3, B3, C4, D4, E4 in the sixth; F3, G3, A3, B3, C4, D4, E4, F4 in the seventh; and G3, A3, B3, C4, D4, E4, F4, G4 in the eighth.

2003

Musical notation for exercise 2003. It is a single staff in bass clef with a 4/4 time signature. The key signature has two flats (B-flat and E-flat). The piece consists of eight measures, each containing a sequence of eighth notes. Fingering numbers 1 through 8 are placed above the notes in each measure. The notes are: G2, A2, B2, C3, D3, E3, F3, G3 in the first measure; A2, B2, C3, D3, E3, F3, G3, A3 in the second; B2, C3, D3, E3, F3, G3, A3, B3 in the third; C3, D3, E3, F3, G3, A3, B3, C4 in the fourth; D3, E3, F3, G3, A3, B3, C4, D4 in the fifth; E3, F3, G3, A3, B3, C4, D4, E4 in the sixth; F3, G3, A3, B3, C4, D4, E4, F4 in the seventh; and G3, A3, B3, C4, D4, E4, F4, G4 in the eighth.

2004

Musical notation for exercise 2004. It is a single staff in bass clef with a 4/4 time signature. The key signature has two flats (B-flat and E-flat). The piece consists of eight measures, each containing a sequence of eighth notes. Fingering numbers 1 through 8 are placed above the notes in each measure. The notes are: G2, A2, B2, C3, D3, E3, F3, G3 in the first measure; A2, B2, C3, D3, E3, F3, G3, A3 in the second; B2, C3, D3, E3, F3, G3, A3, B3 in the third; C3, D3, E3, F3, G3, A3, B3, C4 in the fourth; D3, E3, F3, G3, A3, B3, C4, D4 in the fifth; E3, F3, G3, A3, B3, C4, D4, E4 in the sixth; F3, G3, A3, B3, C4, D4, E4, F4 in the seventh; and G3, A3, B3, C4, D4, E4, F4, G4 in the eighth.

2005

Musical notation for exercise 2005. It is a single staff in bass clef with a 4/4 time signature. The key signature has two flats (B-flat and E-flat). The piece consists of eight measures, each containing a sequence of eighth notes. Fingering numbers 1 through 8 are placed above the notes in each measure. The notes are: G2, A2, B2, C3, D3, E3, F3, G3 in the first measure; A2, B2, C3, D3, E3, F3, G3, A3 in the second; B2, C3, D3, E3, F3, G3, A3, B3 in the third; C3, D3, E3, F3, G3, A3, B3, C4 in the fourth; D3, E3, F3, G3, A3, B3, C4, D4 in the fifth; E3, F3, G3, A3, B3, C4, D4, E4 in the sixth; F3, G3, A3, B3, C4, D4, E4, F4 in the seventh; and G3, A3, B3, C4, D4, E4, F4, G4 in the eighth.

2006 - Region 24

Musical notation for exercise 2006 - Region 24. It is a single staff in bass clef with a 4/4 time signature. The key signature has two flats (B-flat and E-flat). The piece consists of eight measures, each containing a sequence of eighth notes. Fingering numbers 1 through 8 are placed above the notes in each measure. The notes are: G2, A2, B2, C3, D3, E3, F3, G3 in the first measure; A2, B2, C3, D3, E3, F3, G3, A3 in the second; B2, C3, D3, E3, F3, G3, A3, B3 in the third; C3, D3, E3, F3, G3, A3, B3, C4 in the fourth; D3, E3, F3, G3, A3, B3, C4, D4 in the fifth; E3, F3, G3, A3, B3, C4, D4, E4 in the sixth; F3, G3, A3, B3, C4, D4, E4, F4 in the seventh; and G3, A3, B3, C4, D4, E4, F4, G4 in the eighth.

2006 - Region 25

Musical notation for exercise 2006 - Region 25. It is a single staff in bass clef with a 4/4 time signature. The key signature has two flats (B-flat and E-flat). The piece consists of eight measures, each containing a sequence of eighth notes. Fingering numbers 1 through 8 are placed above the notes in each measure. The notes are: G2, A2, B2, C3, D3, E3, F3, G3 in the first measure; A2, B2, C3, D3, E3, F3, G3, A3 in the second; B2, C3, D3, E3, F3, G3, A3, B3 in the third; C3, D3, E3, F3, G3, A3, B3, C4 in the fourth; D3, E3, F3, G3, A3, B3, C4, D4 in the fifth; E3, F3, G3, A3, B3, C4, D4, E4 in the sixth; F3, G3, A3, B3, C4, D4, E4, F4 in the seventh; and G3, A3, B3, C4, D4, E4, F4, G4 in the eighth.