



AIRCRAFT BOARDING VEHICLE MODEL 3003



The Model 3003 Aircraft Boarding Vehicle is designed to service all aircraft with doorsill heights from 100 - 207 inches above the ground. The truck mounted stair offers a universal system for passenger, flight crew, cleaning or maintenance personnel boarding and disembarkation. The module can be mounted on a standard cab chassis, depending on customer preference and requirements. In addition to its full service characteristics, a full complement of standard and optional features make the **Model 3003 Aircraft Boarding Vehicle** the ideal general purpose boarding stair for servicing most commercial aircraft.

DESIGN FEATURES

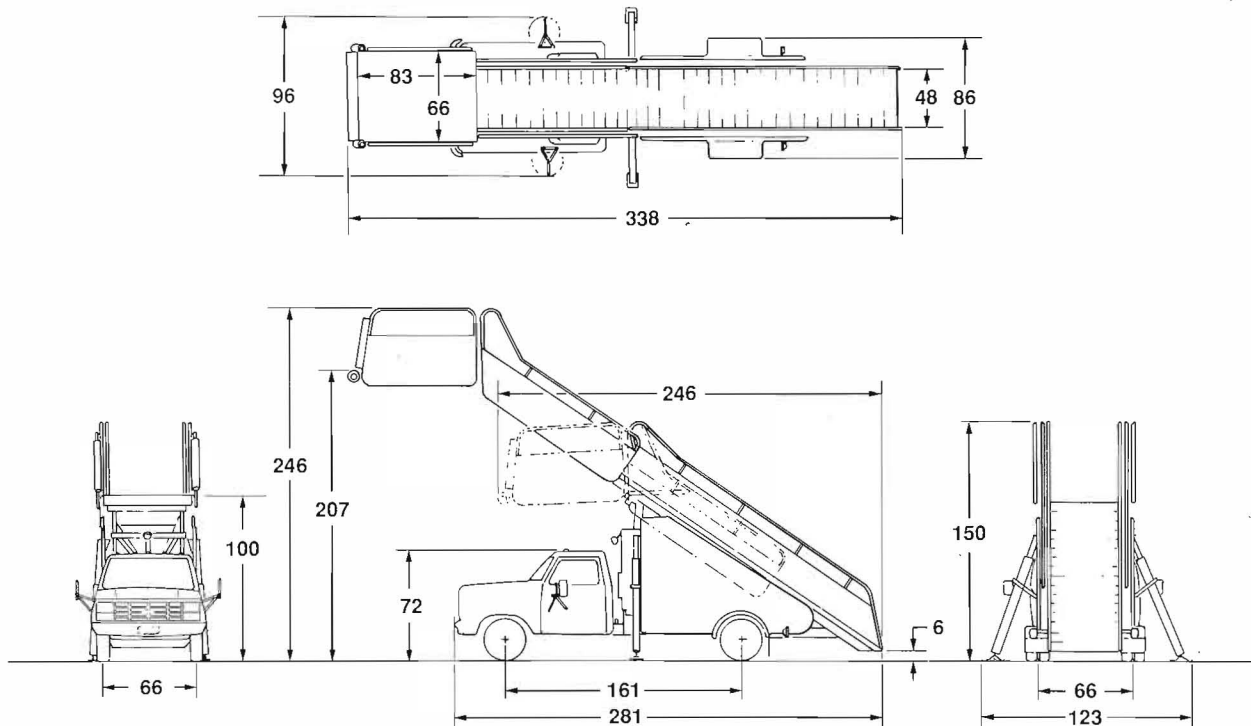
- **Side outriggers**, and front and rear stabilizers provide 90 mph wind load capacity.
- **Ignition system interlock** — outriggers/stabilizers down.
- **Hydraulic pump** — engine mounted continuous drive.
- **Stair and tilt unlock mechanism** — electric solenoid actuated.
- **3-stack manual control valve** for operation of stair, tilt, and stabilizer functions.
- **Diamond plate aluminum** stair tread.
- **Roof window** — 18 inch square tempered safety glass.
- **Handrails** — polished stainless steel.

AIRCRAFT BOARDING VEHICLE MODEL 3003

OPTIONAL EQUIPMENT

- **Stair and platform canopy** with optional side curtains (VIP also available).
- **Beacon** — flashing or rotating.
- **Guards** — grill and side.
- **Rear side guard.**
- **Alternator** — high output.
- **Dual battery system.**
- **Protection system** — engine high temperature/low oil pressure shutdown.
- **Anti-corrosion** treatment and undercoating.
- **Transmission control** — Orscheln, Morse, Quadrastat.
- **Side mirrors** — recreational (extended).
- **Engine block heaters.**
- **MICO** supplemental brake lock.

DESIGN SPECIFICATIONS



Equipment is manufactured and warranted by Accessory Controls & Equipment Corp., NORDCO Div., Rancho Dominguez, California

Sales & Service Locations:

New York • California • Texas • France • Hong Kong • Singapore • Beijing



World Headquarters:
Devtec Corp.

812 Bloomfield Avenue
Windsor, Connecticut 06095
(203) 688-9520 • TLX: 645051 • FAX: (203) 688-8560

Specifications are subject to change without prior notice.